
Chalet Owens

Localization

Country : France

City : Alps

Address : Courchevel (1850) / Ref; A-Ski 1531

Properties

Type : Chalet

Bedrooms : 6

Bathrooms : 7

Sleepings : 12

Showers : 0

WC : 7

Features

Garage - Chef - Wifi - Pool - Pool Heating - Parking - Cleaning service - Concierge Service - Gym - Spa - Hamman – Massage - Sauna - Views - No smoking - Ski - Ski in and out - Jacuzzi - Cinema room - Safe

Description

Chalet Owens has an almost next-to-the-slope location in the Bellecôte area of Courchevel 1850 and is a mere five minute walk from the centre of the resort. What really makes this chalet stand out above others, is the ultra-luxurious 250 m² entertainment area. The interior of the 1,500 m² property, sleeping 12, displays the world's best brands of stylish furnishings and fittings. This is especially evident in the living area with its vaulted ceiling, floor-to-ceiling windows, attractive dining area and separate kitchen.

Three different elevators and various staircases connect the six levels of this outstanding chalet. Guests will love the elegant lounge with its central fireplace, positioned to spread light and warmth to the open plan living area. The entertainment level, with multiple sitting areas, bar lounges, TV's, a wine cellar, a playroom with various video game consoles and an impressive cinema room is a fantastic place for children and adults alike to spend the evening.

The spa level includes a swimming pool with a retractable floor, giving adjustable depth to the pool. Cleverly built partly inside the chalet and partly outside, there is a 15 x 3 metre indoor swimming pool and a 5 x 3 meters outdoor pool, providing pleasure for all times and all seasons.

In the wellness area there is a Hammam, Sauna and a large and comfortable lounge with access to an outdoor terrace. A floor lower, guests will be further surprised by a gym with Technogym equipment, two massage rooms and a ski room with a private elevator to the entrance. Each suite is between 40–62 m² and they can all be configured with either king-size or twin beds. All of the rooms are luxuriously furnished with TV's, a sitting area, bureau, dressing room and an en-suite bathroom with a bath, shower, double basin and a separate WC.

The spacious bedrooms are stylishly furnished in neutral colours. They all feature dressing areas and mini bars too. With floor-to-ceiling windows and doors that give terrace access, the views of the beautiful French Alps are beautifully captured.

Accommodation:

Level 2;

Elevator

Wide living-room with fireplace, plasma/LCD screen, Terrace

TV lounge

Dining area

Separate extra kitchen (main professional kitchen is on-3 with separate elevator)

Level 1;

Bedroom 1: Double bedroom (52m2) King size 180cm bed or can be separated to 2 twin beds with sitting area, TV, dressing, minibar and terrace access. Bathroom with bath and shower, separate WC

Bedroom 2: Double bedroom (52m2) King size 180cm bed or can be separated to 2 twin beds with sitting area, TV, dressing, minibar and terrace access. Bathroom with bath and shower, separate WC

Ground Level;

Main entrance hall with dressing & waiting lounge

Guests cloakroom with WC

Bedroom 3: Double bedroom (40m²) King size 180cm bed or can be separated to 2 twin beds with sitting area, desk, TV, dressing, minibar and terrace access. Bathroom with bath and shower, separate WC

Bedroom 4: Double bedroom (46m²) King size 180cm bed or can be separated to 2 twin beds with sitting area, desk, TV, dressing, minibar and terrace access. Bathroom with bath and shower, separate WC

Level-1;

Bedroom 5: Double bedroom (51m²) King size 180cm bed or can be separated to 2 twin beds with sitting area, desk, TV, dressing, minibar and terrace access. Bathroom with bath and shower, separate WC

Bedroom 6: Double bedroom (62m²) King size 180cm bed or can be separated to 2 twin beds with sitting area, desk, TV, dressing, minibar and terrace access. Bathroom with bath and shower, separate WC

Swimming pool 15 x 3 m indoor, 5 x 3 m outside with mobile floor

Wellness area

Hammam

Sauna and lounge with terrace

Shower & WC

Level – 2;

Party hall of 250m² with Bar, sitting lounges, flat screen, wine cellar

Kids room with Playstation etc

Cinema room

Gym (Technogym equipment)

2 Massage rooms

Styling & Hair room

Ski room with private elevator to the entrance

Level -3

Staff area

Outdoors Features:

Balconies

Terrace

Table & Chairs

Views

Parking /Garage

Features & Amenities:

Sleeps 12: 6 Bedrooms & 7 Bathrooms & WC

2 Elevators

Living room/ dinning area & central fireplace

Fully equipped kitchen with appliances, Coffee machine, Induction hob & Microwave, Fridge /Freezer, Kettle/Toaster & Dishwasher etc

15x3m Swimming pool

Jacuzzi

Hammam/Steam room

2 Massage tables/Treatment Room

Wi-Fi Internet

Gym - Technogym equipment

Cinema Room/ TV

Safe

Hairdryers

Satellite television (Canal Satellite)

DVD players in each room

Ski room with heated boot warmers with its own lift

Garage

Views

Services Included in the Rental:

Housekeepers maids 8h/day - Daily maintenance and cleaning 8am to 10pm

Butler 10h/day -Meal service

Chef 10h/day - Meal service for Breakfast, lunch or dinner and tea-time (six evenings)

Chauffeur 8h/day - In-resort driver service 8am to 10pm

Chalet Manger 8h/day - Chalet management, stay organisation and conciergerie

Welcome reception & welcome basket
Wood for the fireplace
Champagne
Turn down service
Linen & towels
Flowers
Welcome bath products
Final cleaning
Beds made before arrival
Towels' and linen's change(s) (sheets and towels) during the stay
Slippers

Extras Not Included in the Rental: *on request when booking & subject to availability*

Extra cleaning on request (additional fee)
Pre stocking Chalet
Food & beverages for the preparation of the meals
Refundable Security Deposit TBA € when booking to be paid to the agency
Cot & High chair
Tourist tax "Tax de Sejour" approx starting at 5.53 €/adult/night and will be paid end of the stay or taken from the Security Deposit Please enquire as rates change per year
Nanny Starting at approx. 30.00 € per hour
Private airport transfers can be arranged for travel out of resort at request for an additional charge
In-chalet ski and boot delivery service
Lift pass delivery service
Ski equipment hire
In-chalet massage and hairdressing
Private ski guides, Heli-skiing and ski lessons
Pre-arrival shopping service
Helicopter transfers
Beauty treatments and massages to the chalet
Access to wines and champagnes in the wine cellar
Organised activities: snow mobiling, heliski, paragliding, sled-dog...
Please enquire about any other specific service requests

Please Note:

No pets
No smoking inside Villa
Check in time: 4 pm to 6 pm
Check out time: before 10am

Location:

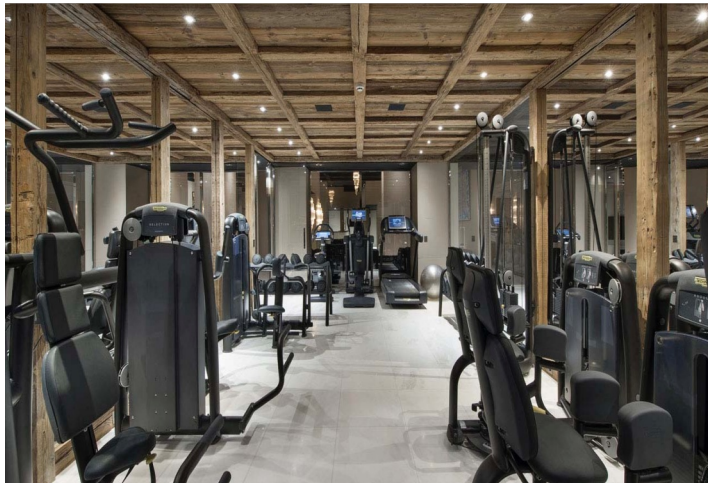
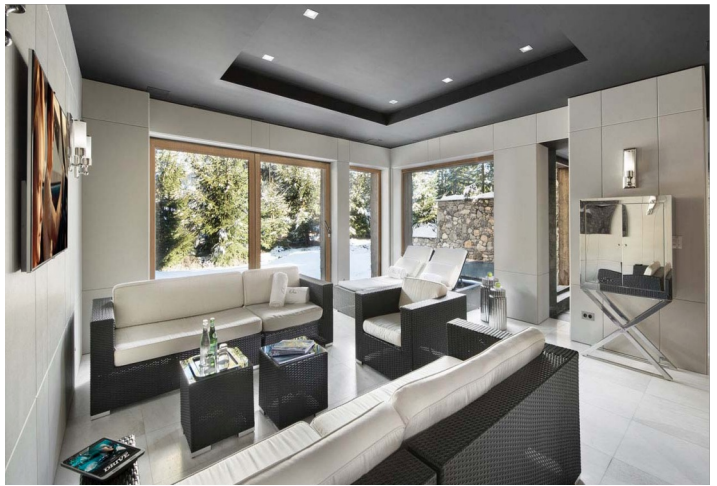
Distance from the centre : 400 m
Distance from ski lift : 150 m
Closest ski slope : Plantret
Distance from the slopes : 0 m
Distance to ski school : 450 m
Closest ski lift : Plantret

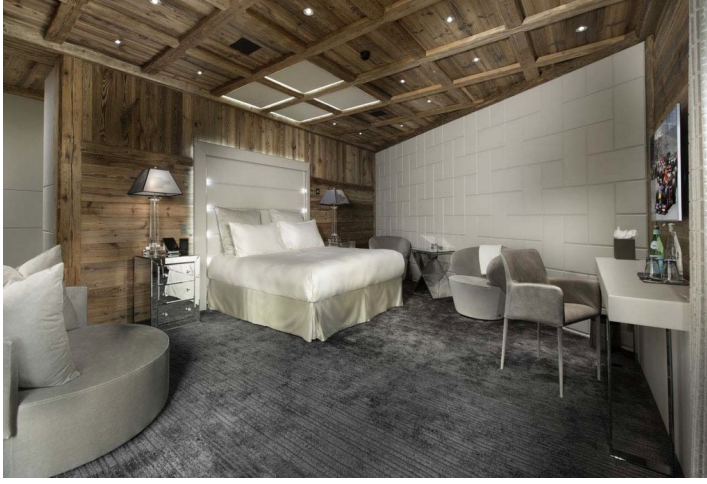
Resort access:

Courchevel altiport 12min / 5km
Megeve altiport 1h / 95km
Chambery airport 1h / 100km
Geneva airport 2h / 180km
Lyon airport 2h / 180km
Albertville train station 45min / 49km
Bourg Saint Maurice train station 50min / 50km
Chambery train station 1h / 180km
Lyon train station 2h / 190km
Moutier train station 30min / 20km

Galerie







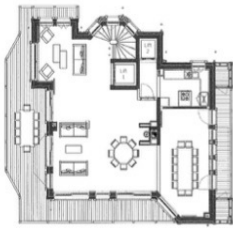
Level 0



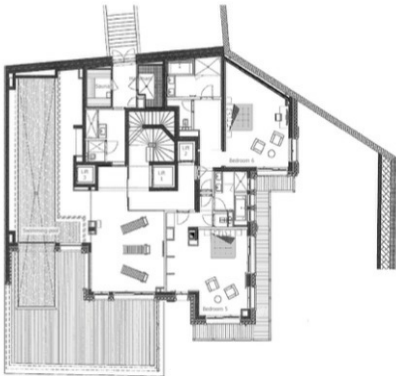
Level 1



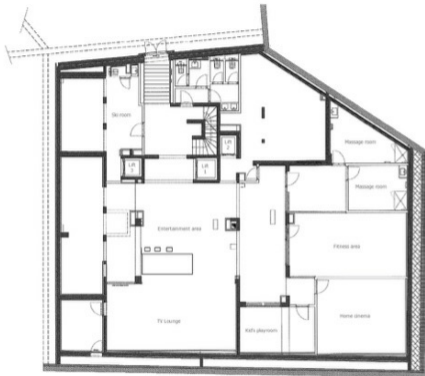
Level 2



Level -1



Level -2



Level -3

