
Chateau d'Estoublon

Localization

Country : France

City : Provence

Address : Fontvieille/ Ref; FP 692

Properties

Type : Chateau

Bedrooms : 10

Bathrooms : 8

Sleepings : 20

Showers : 0

WC : 9

Features

Chef - Air conditioning - Wifi - Pool - Pool Heating - Parking - Cleaning service - Barbecue - Cot - Animals accepted - Garden - Gym - Spa - Hamman – Massage - No smoking - Safe

Description

Surrounded by vineyards and olive trees, Château d'Estoublon combines heritage, sophistication, chic with modern Rococo in a contemporary yet cosy style and it brings all the natural beauty of Provence. Château d'Estoublon dates from 1731, it is located in a 200-hectare (500 acres) private estate that produces the very best olive oil and wine and is only 3.5 km from Fontvieille.

It consists of a private outdoor heated pool and rose garden, one enters the Château via sweeping entry staircases, the interiors of Chateau d'Estoublon present a modern chic style, parquet floors, ornate moldings and marble fireplaces with its numerous living and dining rooms are the setting for modern pieces. The castle on 3 floors features 10 bedrooms, six bedrooms with en-suite bathrooms, three with king size beds and three with queen size beds and four bedrooms with shared bathrooms.

There is a home-cinema system and guests also have access to a hammam and a fitness/gym room. Services include of a chef, butler and housekeeper.

This region has plenty to offer, apart from the charming picturesque village of Fontville under 3 kilometres away with its shops and cafes and restaurants, one can venture a little further such as the lively village of St Rémy just 18 kilometres is a charming classical little town, capital of the Alpilles with all the amenities, boulangeries, little boutiques, quaint pavement cafes and excellent restaurants, its winding cobbled lanes you will discover the small squares, historic buildings, churches and museums and on Wednesday the colourful weekly market will offer the opportunity to discover local products and handicrafts which is a must to see.

A little further north of St Rémy is the magnificent walled city of Avignon, a UNESCO World Heritage Site, which boasts the gothic "Palace of the Popes", a wonder not to be missed. Awe-inspiring Roman buildings and ruins are scattered everywhere in this Ancient Roman Province, the impressive triple-tiered aqueduct of the Pont du Gard and the massive arena in Arles are certainly worth a visit. Further southwest, under an hour's drive, is the Camargue National Park, a fascinating wetland known for its pink flamingos, fighting bulls and wild horses, and which offers opportunities. Finally the Medirarean sea, the sandy beaches at Ste-Maries-de-la-Mer are about an hour by car.

Accommodation: 1500 m2

Bedroom 1 *Les Papillons*: King size 180cm bed, en-suite bathroom with walk in shower, television, safe

Bedroom 2 *es Oiseaux*: King size 180cm bed, en-suite bathroom with shower/bath television, safe, with a private terrace

Bedroom 3 *La Roseaie*: Queen size 160cm bed, en-suite bathroom with shower & bath, television, safe

Bedroom 4 *La Chasse*: Queen size 160cm bed, en-suite bathroom with shower, television, safe

Bedroom 5 *L'Horloger*: Queen size 160cm bed, en-suite bathroom with shower/bath, television, safe

Bedroom 6 *La Cavaliere*: King size 180cm bed, en-suite bathroom with shower & bath, dressing, television, safe

Bedroom 7 *l'Estouble* : Queen size 160cm bed, bathroom with shower shared with l'Olivade, television, safe

Bedroom 8 *l'Olivade*: Queen size 160cm bed, bathroom with shower shared with l'Estouble, television, safe

Bedroom 9 *La Suite Familiale*: Queen size 160cm bed, bathroom with shower/bath shared with a 'children's Room', television, safe

Bedroom 10 *Children's Room*: 2 Twin size beds, bathroom with shower/bath shared with 'La Suite Familiale', television, safe

Outdoors Features:

200 hectares
Private gardens
Heated swimming pool
Ample private parking
Gated property

Features & Amenities:

Sleeps 20: 10 bedrooms, 8 bathrooms, 9 WCs.

Wi-Fi
Air conditioning
Gym/Exercise room
Hamмам
Billiard room
Elevator
Home Cinema
Professional kitchen
Formal dining area
Television
Bar
Conference room
Wine Cellars
Security system
Cots & High chairs

Services & Staff Included in the Rental:

Chef/ Cook
Butler
Maid housekeeping
Bed and household linens
Bed linen / towels changed every week
Daily housekeeping cleaning except Sundays
Breakfast, Lunch and Dinner Included, Chef design menus based on our guests' preferences & restrictions ingredients are included
Soft Drinks included, such a Coca Cola, fruit juices, sparkling water a guests are invited to share a list of the preferred drinks that they will have at their disposal during the stay
Unlimited wine included from the estate
Utilities - Electricity, water, gas
Internet Wi-Fi
Garden & pool maintenance
Housecleaning upon departure
Pool towels
Cot/Crib & highchair

Extras Not Included in the Rental: *on request when booking & subject to availability*

Refundable Security Deposit 20 000 € to be paid with the final rental instalment
Local Tourist Tax "Tax de Séjour" starting from 4.00 € per person per night *please enquire* to be paid locally in cash or pre arranged when booking
Extra housekeeping on request starting at 30 € per hour
Baby-sitter
Cook/ Chef
Pre stocking groceries
Transfers
Concierge Services
Villa pre-stocking on request
Babysitting
Concierge service

Please Note:

Price on request
Weddings and social events allowed (extra costs may apply according to guests' request) please enquire for further information & pricing
No smoking
Pets on request
Check-in is anytime after 4:00 pm
Check out by 10:00 am

Location:

- Fontvieille 3.5 km
- Saint-Rémy-de-Provence 18.5 km
- Avignon 30 km
- Arles 13 km
- L'Isle sur Sorgue 49 km
- Pont du Gard 34 km
- Nîmes 38 km
- Marseille 88 Km
- Aix en Provence 74 km
- Nice 246 km
- Airport 62 km to Marseille Provence Airport (MRS)
- Airport Avignon 33 km
- Airport Nimes 37 km

Galerie





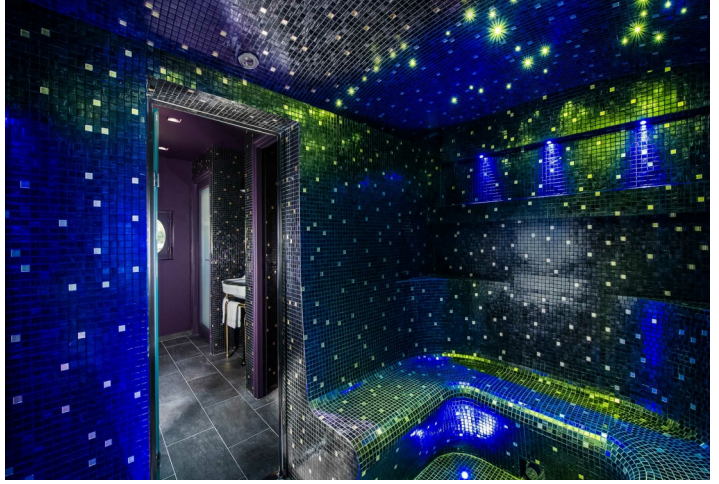


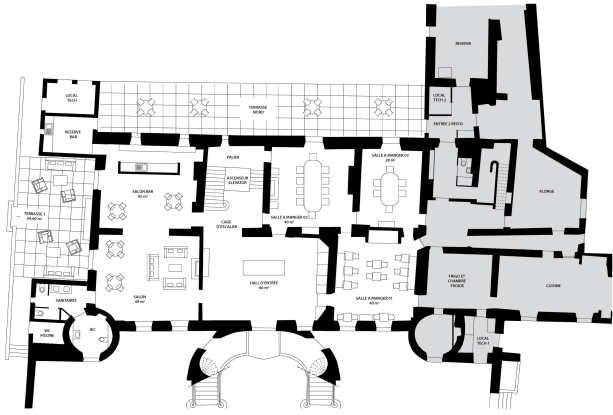




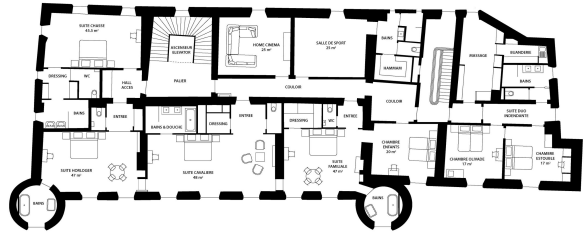




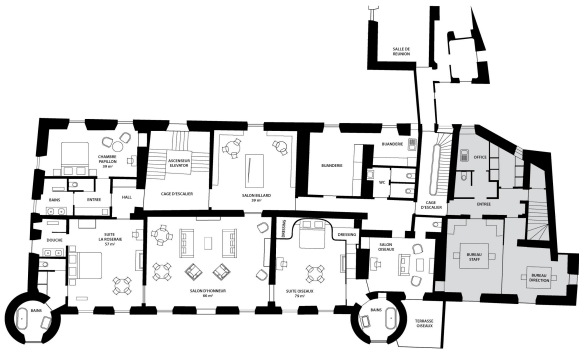




PLAN CHATEAU NIVEAU RDC



PLAN CHATEAU NIVEAU 2



PLAN CHATEAU NIVEAU 1