
Chalet Tahoe

Localization

Country : France

City : Alps

Address : Courchevel (1850) / Ref; A-Ski 1530

Properties

Type : Chalet

Bedrooms : 8

Bathrooms : 8

Sleepings : 16

Showers : 0

WC : 9

Features

Chef - Wifi - Pool - Pool Heating - Parking - Cleaning service - Concierge Service - Gym - Spa - Hamman –
Massage - Sauna - Views - No smoking - Ski - Ski in and out - Jacuzzi - Cinema room - Safe

Description

Beautiful blend of traditional Alpine architecture and modern comforts only 30 metres from the Bellecôte piste and a few minutes' walk from the centre of Courchevel 1850, sits this beautiful chalet.

Set over five levels, connected with three elevators, and with 1,000 metres of living space, this chalet can house 16 guests in eight bedrooms. Chalet Tahoe can be linked with Chalet Owens to accommodate large groups of family or friends or corporate parties. The spa, with an indoor swimming pool, hot tub and steam room, and relaxation facilities are exceptional.

Recently renovated, the interiors offer a luxurious setting using elegant monochrome shades accented with modern art. The living area's ceiling is double height, creating a sense of open space in the two lounge areas with a central fireplace and bar area. Next to the dining area is a piano for evening entertainment and there is a separate professional kitchen. The whole area has terrace access. On the ground floor entrance level is an office space.

On one of the lower levels is an amazing spa and entertainment area, retaining the mountain atmosphere of the chalet with its vaulted ceiling and rough stone walls.

A most attractive feature of the spa is the 15mx3m indoor swimming pool, a giant Jacuzzi and a modern Hammam. A private massage room and a gym with a wide variety of Technogym equipment form part of the wellness area.

Guests will have many laid back evenings in the cinema room with its fluffy red velvet carpet and comfortable seating.

Decorated in similar stylish fashion, are eight generously sized bedrooms, comfortably accommodating 16 guests. The rooms range from 35m² to 60m² in size and all of them have direct access to a terrace or a balcony.

Each of the luxurious rooms has a double bed, dressing area, sitting area with TV, a safe and balcony access. The bathrooms all have marble en-suite bathrooms, each with a baths, rain shower and separate WC.

Accommodation: 1000 m²,

Second level;

Elevator

Bedroom 1: Large bedroom (40 sqm) with King-sized 180cm bed, balcony, dressing area, en-suite marble bathroom with rainfall shower, bath and separate WC

Bedroom 2: Large bedroom (35 sqm) with King-sized 180cm bed, balcony, dressing area, en-suite marble bathroom with rainfall shower, bath and separate WC

Level 1;

Elevator

Living room with central fireplace, flat screen TV

Fully equipped open kitchen

Dining area with big wooden table

Guest cloakroom with WC

Big West exposed terrace

Ground floor;

Elevator

Lobby

Bedroom 3: Large bedroom (40 sqm) with King-sized 180cm bed, balcony, dressing area, en-suite marble bathroom with rainfall shower, bath and separate WC

Bedroom 4: Large bedroom (40 sqm) with King-sized 180cm bed, balcony, dressing area, en-suite marble bathroom with rainfall shower, bath and separate WC

Bedroom 5: Large bedroom (40 sqm) with King-sized 180cm bed, balcony, dressing area, en-suite marble bathroom with rainfall shower, bath and separate WC

Office area

Garage

Lower level -1;

Elevator

Bedroom 7: Large bedroom (35 sqm) with King-sized 180cm bed, balcony, dressing area, en-suite marble bathroom with rainfall shower, bath and separate WC

Bedroom 8: Large bedroom (35 sqm) with King-sized 180cm bed, balcony, dressing area, en-suite marble bathroom with rainfall shower, bath and separate WC

Independent Staff area

Lower level -2;

Elevator

Swimming pool

Hot tub/Jacuzzi

Steam room/Hammam

Relaxation area

Cinema/TV room

Gym Technogym equipment

Fitness Massage/Treatment Room

Cloakroom with WC

Outdoors Features:

Balconies

Terrace

Table & Chairs

Views

Parking /Garage

Features & Amenities:

Sleeps 16: 8 Bedrooms & 8 Bathrooms & WC

2 Elevators

Living room/ dinning area & central fireplace

Fully equipped kitchen with appliances, Coffee machine, Induction hob & Microwave, Fridge /Freezer, Kettle/Toaster & Dishwasher etc

15 x 3m Swimming pool

Jacuzzi

Hammam/Steam room

Massage/Treatment Room

Wi-Fi Internet

Gym - Technogym equipment

Cinema Room/ TV

Safe

Hairdryers

Satellite television (Canal Satellite)

DVD players in each room

Ski room with heated boot warmers

Kaleidescape entertainment system

Garage

Views

Services Included in the Rental:

Housekeepers 8h/day - Daily maintenance and cleaning 8am to 10pm

Butler 10h/day - Meal service

Chef 10h/day - Meal service for Breakfast, lunch or dinner and tea-time (six evenings)

Chauffeur 8h/day - In-resort driver service 8am to 10pm
Chalet Manger 8h/day - Chalet management, stay organisation and conciergerie
Welcome reception & welcome basket
Wood for the fireplace
Champagne
Turn down service
Linen & towels
Flowers
Welcome bath products
Final cleaning
Beds made before arrival
Towels' and linen's change(s) (sheets and towels) during the stay
Slippers

Extras Not Included in the Rental: *on request when booking & subject to availability*

Extra cleaning on request (additional fee)
Pre stocking Chalet
Food & beverages for the preparation of the meals
Refundable Security Deposit 40 000 € to be paid with the final rental instalment
Cot & High chair
Tourist tax "Tax de Sejour" approx starting at 5.53 €/adult/night and will be paid end of the stay or taken from the Security Deposit Please enquire as rates change per year
Nanny Starting at approx. 30.00 € per hour
Private airport transfers can be arranged for travel out of resort at request for an additional charge
In-chalet ski and boot delivery service
Lift pass delivery service
Ski equipment hire
In-chalet massage and hairdressing
Private ski guides, Heli-skiing and ski lessons
Pre-arrival shopping service
Helicopter transfers
Beauty treatments and massages to the chalet
Access to wines and champagnes in the wine cellar
Organised activities: snow mobiling, heliski, paragliding, sled-dog...
Please enquire about any other specific service requests

Please Note:

No pets
No smoking inside Villa
Check in time: 4 pm to 6 pm
Check out time: before 10am

Location:

Distance from the centre : 400 m
Distance from ski lift : 150 m
Closest ski slope : Plantret
Distance from the slopes : 0 m
Distance to ski school : 450 m
Closest ski lift : Plantret

Resort access:

Courchevel altiport 12min / 5km
Megeve altiport 1h / 95km
Chambery airport 1h / 100km
Geneva airport 2h / 180km
Lyon airport 2h / 180km
Albertville train station 45min / 49km
Bourg Saint Maurice train station 50min / 50km
Chambery train station 1h / 180km
Lyon train station 2h / 190km
Moutier train station 30min / 20km

Galerie







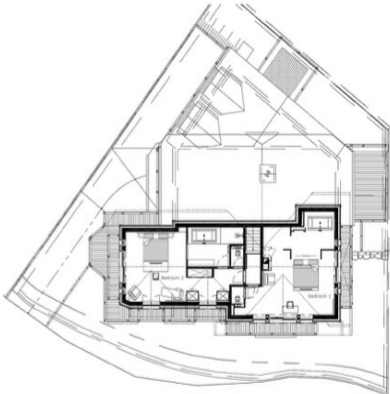


Level 1

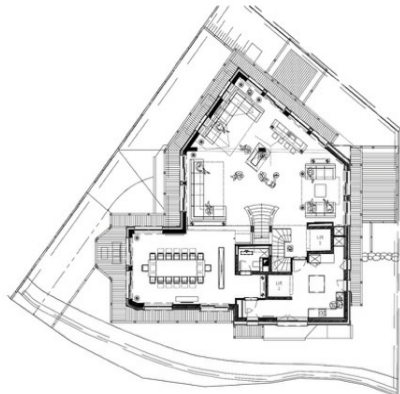
Level 0



Level 2



Level -1



Level -2

